

Saltaire Methodist Church
saltairemethodistchurch.org.uk
NEWSLETTER
March and April 2009

The Season of Lent Choosing to change, that we might better change the world!

Change is part of life. We only need to look in the mirror to see the evidence of this! Or at the garden. Or the newspaper. All around us the world is changing. Fashions look different, people behave differently, society works differently. Change is unavoidable!

Some change feels good, exciting, enabling: a child's first step, word, success, a new relationship, a scientific advance that enables travel, communication or healthcare undreamt of a generation ago.

Other change feels bad, disabling, creating anxiety: the loss of job or place or ability, the death of a loved one and technological developments which challenge our firmly held values.

The kinds of change I've just spoken about affect us deeply, touch our sense of who we are: for good or ill. Yet some change hardly affects us at all. Who captains the English Cricket Team or manages Chelsea Football Club will affect me not at all!

Change in the church is nothing new. It has been there from the very beginning. The first major change was from a new Judaism sect into a church for all: gentiles, women and slaves included. Church history is full of shifts and schisms, revisions and reformation, sometimes standing against the culture of the day, sometimes accommodating it. Change in the Methodist Church is nothing new either – we're all too young to remember Methodist Union in 1932, but for some "Primitive" and "Wesleyan" would have had had significance in our younger days.

We're seeing change in church now. There are ecumenical partnerships; worship is more "participative" and varied. Across the church there's a move from maintenance to mission.

Part of this will see new circuits. From September 2009, rather than being part of the Shipley and Bingley Circuit, we'll belong to a new circuit, with 18 churches.

Now, for some of you, this change to a new circuit will be like the England cricket captain or the Chelsea manager! In other words, your worship, and witness based at Saltaire Methodist in your community will continue as before. You'll have a new minister, see new faces leading worship, and be invited to events a little farther afield, but otherwise life will go on.

For others the change will mean new opportunities and fresh challenges, with the pooled resources, wider experience, and greater potential impact of the new circuit. Some will take on new responsibility; others will put tasks down, leaving space for new or different things.

For those of you relatively unaffected, please offer your prayers and support for those responsible for steering the change.

For those at the heart of changes we pray that they might be listening for God's guidance and direction, so that the new circuit created will help sustain faithful worship and, better enable the mission of all God's people in this part of God's world.

Change happens, whether we choose it or not (glance in the mirror!). *Mapping a way forward*, (the national Methodist initiative that new circuits is part of), is about us, with God's guidance, shaping the future by the choices we make.

Lent is the time of change ~ opening ourselves again to the challenge of following Christ, wherever he leads.

Sarah

The Meaning of Lent

"Then Jesus was led up by the Spirit into the wilderness to be tempted by the devil. And he fasted forty days and forty nights, and afterward he was hungry." (Matt 4:12.)

This is the Biblical basis of the period called Lent, given to us to prepare for the Feast of Feasts, the Resurrection. Just as we need time to prepare for any great event in life, we need time to make ourselves ready to participate in the blessed and wondrous event commemorated by Easter.

Lent gives us the opportunity to:

- Renew our commitment to God
- Reflect on our lives and let them be directed by God
- Respond to Jesus' call for love and mercy toward all of God's children

The heart of Lent is inner penitence and reconciliation with God. Begin with self-examination and inner healing. Set aside this period to examine and evaluate your life as a Christian. Spiritual renewal is possible only if you're willing to repent for your sins and change your life for God.

Uniting with God involves:

- Sorrow for Sins--Changing your life begins when you admit that Christ suffered and died for your sins.
- Spiritual Growth--Christian maturity begins when you acknowledge dependence on God. Resolve to accept and carry out His will.
- Commitment--Realize that commitment to God is more than just going to church. It involves carrying out God's will daily, whatever the circumstances.
- Perseverance--Keep your hope and faith in Easter's promises alive all year long, every year. Realize that Christians of every age have experienced times of testing and have overcome temptation and despair.

©2005 Diocese of the Armenian Church of America (Eastern).

EASTER EGGS

THE FIRST EASTER EGG

According to Orthodox tradition



Mary Magdalene, who had patrician rank, gained an audience in Rome with the emperor after the Crucifixion and Resurrection of Christ. She denounced Pilate for his handling of Jesus' trial and then began to talk with Caesar about Jesus' resurrection. She picked up a hen's egg from the dinner table to illustrate her point about resurrection. Caesar was unmoved and replied that there was as much chance of a human being returning to life as there was for the egg to turn red. Immediately, the egg miraculously turned red in her hand! It is because of this tradition that Orthodox Christians exchange red eggs at Easter.

A POLISH LEGEND

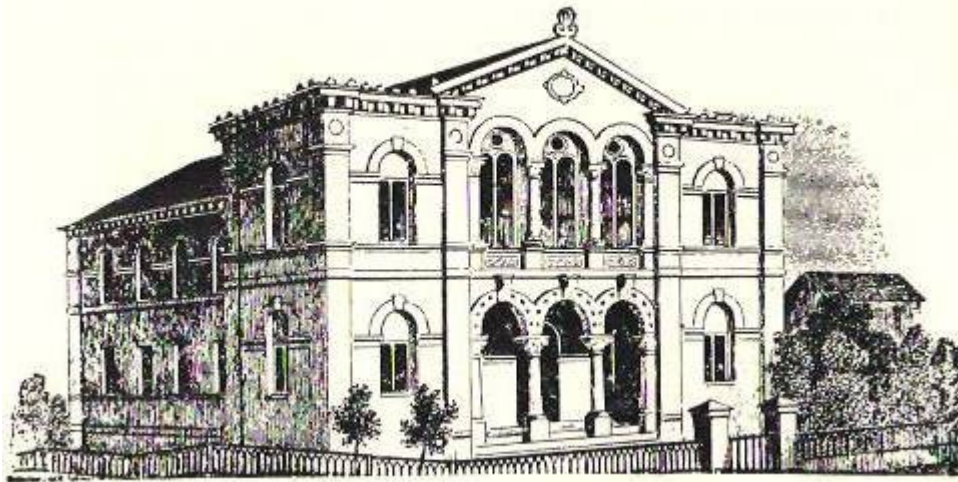
A Polish legend tells of when Mary Magdalene went to the sepulchre to anoint the body of Jesus. She had with her a basket of eggs. When she arrived at the sepulchre and uncovered the eggs, the pure white shells had miraculously taken on a rainbow of colours.

Another legend concerns the [Virgin Mary](#). It tells of the time the Blessed Virgin gave eggs to the soldiers at the cross. She entreated them to be less cruel and she wept. Her tears fell upon the eggs, spotting them with dots of brilliant colour.

AN ENGLISH CUSTOM

Decorating and colouring eggs for Easter was the custom in England during the Middle Ages. The household accounts of Edward I, for the year 1290, recorded an expenditure of eighteen pence for four hundred and fifty eggs to be gold-leafed and coloured for Easter gifts.

Saltaire Methodist Church



" IN THE BEGINNING "

In May 1865, Miller Marshall who lived in George Street hosted an important meeting in his home. Chaired by the Rev'd Thomas Dunn, the local superintendent minister, it was convened to discuss the possibility of building a Wesleyan Chapel in Saltaire. This would mean Methodists living in the village would no longer have to walk to Shipley each Sunday for worship.

Before discussing the project with Titus Salt, it was decided to send canvassers to every house in the village to see whether there was a potential congregation. The response was positive and subscriptions began to come in so Titus was approached as all the land in the village belonged to him. Legend says that he generously gave land for the church and Sunday School but in reality he sold the land on which our church still stands to the Saltaire Wesleyan Chapel Trust. The Deed of Sale is still in existence in the safe at Baildon.

The next year, money raising began in earnest. Tea-meetings were very popular and must have meant sacrificial giving. Each tray holder paid ten shillings at a time when a bowl of soup cost a penny in the mill canteen and a 'good plate of meat' was only two pence. It was only a short time, therefore, before the Trustees felt able to approach the architects Mawson and Lockwood who were responsible for the design of most of the village. They produced plans for a chapel that could seat 800 with a schoolroom below it that could accommodate 300 children. The cost would be £3,800. The Trustees accepted these setting a target of raising three quarters of the money by the time the building was complete.

Titus Salt was invited to lay the foundation stone which he did on 6th October 1866. The President of the Wesleyan Conference, the Rev'd William Arthur was also present and spoke at the ceremony. Building continued throughout 1867 but eventually the official opening could be planned, and the date was set for February 1868.

Perhaps inevitably as the date drew near, there was panic that the building would not be ready in time. The greatest problem was damp which raised fears that the building would not be dry enough to use for services in February. The resourceful Trustees decided to burn portable fires day and night and signed up as many volunteers as possible to act as night watchmen.

This worked and when Friday 7th February 1868 dawned the church was dry. The Rev'd William Arthur returned to conduct the first service. Celebrations continued for over a fortnight and fifteen services were held in nineteen days. The second weekend saw the opening of the Sunday School which was a success from the outset and it wasn't many years before it was overcrowded and a new one had to be built.

Communion plate, a font and a pulpit Bible and hymnbook had all been given for the opening ceremony, as had the two chairs that are still in church but a harmonium had to be borrowed as an organ could not be afforded at this stage. The final bill totalled £5,000 so clearing the outstanding

debt was seen as priority. This was done by 1873 and on Boxing Day that year a concert by Dr Spark of Leeds celebrated the installation of the organ.

In the next Newsletter I shall look at what has happened since the end of the nineteenth century. As we work towards the changes that will happen in September it's good to remember that Saltaire Methodist Church has thrived over the years because of the hard work and dedication of its members. As long as we continue to follow their example, I can see no reason why, whatever the changes, it should not continue to be a Christian presence in the community for many years to come.

Bradford ~ City of Sanctuary?

www.cityofsanctuary.org/bradford

The city of Bradford has a proud history of welcoming and including newcomers from all corners of the world. A City of Sanctuary Bradford working group was established in July 2008, with a vision to see this culture of welcome and hospitality extended to include those seeking sanctuary in our city. Their agenda is outlined below.

- *We celebrate the huge contribution that asylum seekers and refugees bring to the city and want to see this more broadly recognized.*
- *We aim to challenge some of the misinformation and negative stereotypes already in the public domain.*
- *We hope to stimulate opportunities for those seeking sanctuary to participate fully in the life of this city.*
- *We want to build a culture of welcome and hospitality where those seeking sanctuary are treated humanely and with respect and the contributions they can make to our community are welcomed.*

They are very grateful for generous financial support from the Cooperative Local Members Committee, as well as much practical support from Touchstone

Sheffield is already a City of Sanctuary and 14 other cities are working towards it. The main way churches can support this, is to join other community, faith and local groups and institutions in signing the Resolution of Support to show that they are committed to welcoming and including those seeking sanctuary in their activities and to support Bradford declaring itself a City of Sanctuary. It is similar to the way cities have become Fair Trade cities.

Already Hindu and Sikh groups and many community groups (60 so far) have signed up and it would be a pity if churches were not seen to be supporting this venture.

Joe Batt has sent copies of the Resolution of Support and information about the idea of Cities of Sanctuary to all churches in Shipley and our Church Council will be deciding whether or not to sign this to indicate our support at its meeting on 4th March. Tell any member of the Church Council what you think so that we can fairly represent the views of the whole church.

Answers to last time's puzzle

Across

**8 Their garments 9 Pit 10 Spiritist 11 Range 13 End than
16 Scented 19 Began 22 Repayment 24 Ewe 25 Such knowledge**

Down

**1 Stupor 2 Beaten 3 Prospect 4 Famine 5 Omri 6 Enrich
7 Eshton 12 Arc 14 Do battle 15 Asa 16 Stress 17 Expect
18 Die for 20 Greedy 21 Needed 23 Yoke**

The Mission of the Twelve Disciples

Fill in the gaps with the words to complete the puzzle

Thanks to Liz Chadwick (perhaps better remembered as Libby Salter) for this puzzle

4 letter words

Coat
Gold
Heal
John
Pray

5 letter words

Brass
Doves
House
James
Jesus
Peter
Power
Scrip
Simon

6 letter words

Andrew
Israel
Lepers
Philip
Preach
Purses
Silver
Twelve
Wolves

7 letter words

Cleanse
Galilee
Journey
Mission

8 letter words

Serpents
Sparrows

9 letter word

Disciples

10 letter words

Holy Spirit
Provisions

11 letter words

Bartholomew
Persecution

12 letter word

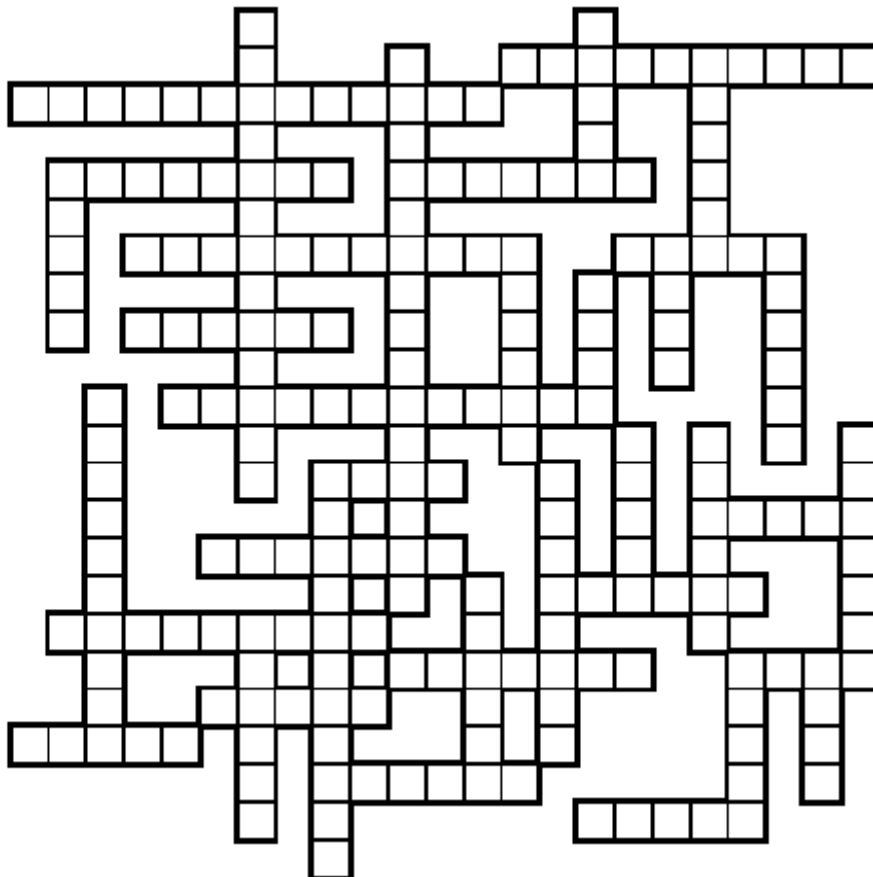
Raise the dead

13 letter words

Cast out devils
Judas Iscariot

15 letter word

Kingdom of heaven



Art Exhibition 10 ~20 September 2009



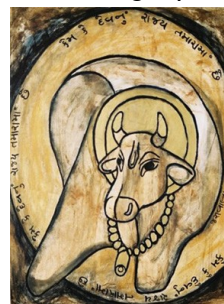
Our annual Art Exhibition is widely recognised as a good example of 'Fresh Expressions' of being church in the West Yorkshire District. Nothing else we do brings so many people across our threshold, people with whom we can engage in conversation. Once again this year, there will be two exhibitions ~ one by a professional artist upstairs, the other by our Art Group in the Hall downstairs. They have already decided the theme for another large corporate picture for the back wall, though its title is currently a closely guarded secret.

Caroline Jariwala has accepted our invitation to show some of her work here. She already knows our building as she led a creative workshop here during our first exhibition. Indian by birth, she is influenced by the imagery of her Hindu cultural inheritance though she herself is now a Christian. The title of her exhibition is *Painted Prayers and Healing Waters*.

She has exhibited her work nationally since 1986. In 1990 she qualified as a teacher and has since worked on projects in schools, art galleries and community venues, including Cartwright Hall and Buttershaw Upper School here in Bradford.

Below are her words about the pictures she is bringing.

I have been inspired by the stories around the four evangelists who wrote the gospels. I have painted elements and symbols that have been used to describe them, as St Luke is Shiva's



white bull who symbolises protection.

I have used earthy colours, as well as gold and henna. Henna is used as a paste to decorate hands and feet as part of a specific celebration, such as a wedding or Eid. I have used henna as a representation that links my Indian cultural roots and Gujarati

On each painting I have attributed a gospel quotation in Gujarati.

normally
physical
heritage.

Venture FX An initiative for connecting with young adults

The Methodist Church has always taken seriously the need to make the good news of Jesus Christ known to all people and especially those who don't easily connect with the church. The Pioneering Ministries Scheme is a bold and exciting initiative to reach young adults with no Christian heritage. Over the next five years it is planned to identify 20 people with the gifts to pioneer new Christian communities among people of this age group, and 20 locations where this can happen.

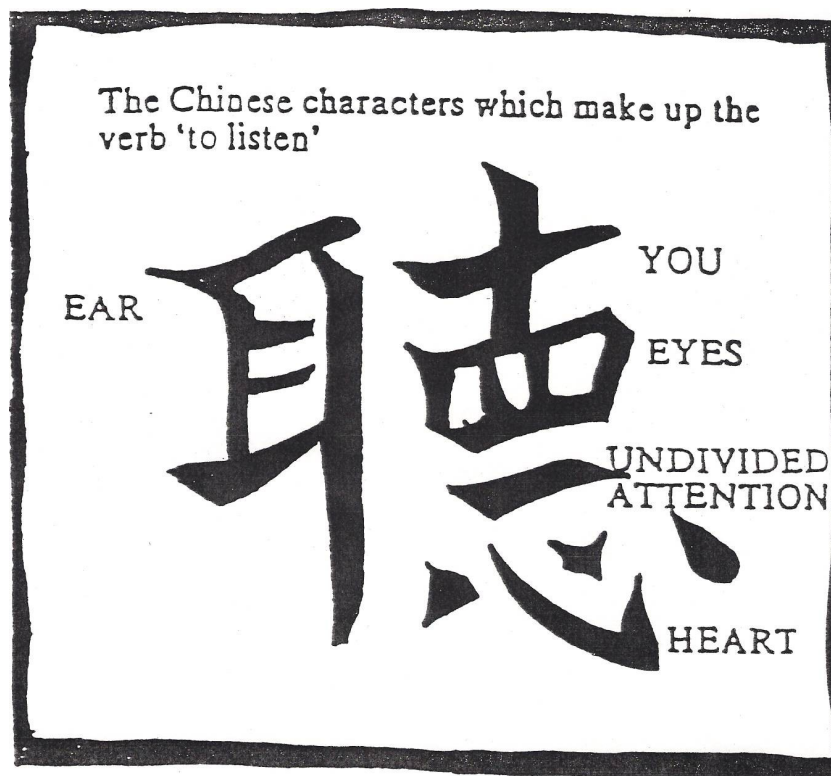
The scheme is named venture FX to reflect its objective, which is to establish fresh expressions of church in new places and in new ways within a culture of holy risk-taking. The scheme is intended to complement the grass roots development of fresh expressions throughout the church and will add a strategic dimension to what is already happening, by focusing on this age-group and by releasing those who are identified as having pioneering gifts to devote their energy and vision to this task.

Ian Bell, the Coordinator of the Scheme, says, "I believe that the connexional Pioneering Ministries Scheme has the potential to release people with the appropriate gifts to establish new models of church and to offer an alternative pattern for creating Christian communities among some of the people who are hardest to reach in our contemporary culture. I am excited that the Methodist Church has the vision and determination to pursue such a ground-breaking and risky project."

The Revd Dr Martyn Atkins, General Secretary of the Methodist Church endorses venture FX by saying, 'A stated priority of the Methodist Church is to seek fresh ways of being church, particularly ways which enable groups of people largely missing from very many local churches today to encounter Christ, and his community of followers, and be invited to become Christian disciples. The Pioneering Ministries Scheme is an intentional attempt to pursue this priority in sensitive,

authentic, apt and culturally appropriate ways.'

A Prayer from the Women of New Zealand



We are so busy, Lord, we do not listen,
The world is so noisy, Lord, we do not hear.
We do not hear what your Spirit is saying to each one of us.
We have been afraid of silence.
Lord, teach us to use your gift of silence.
Teach us, Lord.



District Network Fellowship Day

At the Brewery Retreat Centre, Ilkley

10.00am – 4.00pm 30th April

(Booking by 1st April)

Leader: Rev'd Peter Whittaker

Theme: Faith and Senses – a journey into God through Creation

Cost: £19.00 which includes coffee, lunch and afternoon tea
More information? - board downstairs or see Maureen Gray

**Have you some free time on Monday or Friday mornings?
Could you use it to help Cuppacare?**

Cuppacare needs new volunteers to work in the kitchen or serve.

*You can choose your hours as they operate flexitime!
See the board downstairs or see Maureen Gray*



Moneywise

Supported by Shipley Christians Together
Confidential counselling and guidance on money matters
Ring 07507 208258

Easter Offering Envelopes

Available on 5th, 12th, 19th April

Dedication of all donations at Circuit Service on 26th April at Eldwick

Speaker: Sharon Fell

Memories of her trip to Uganda with Rev'd Dr Martyn Atkins in 2008

Visit to Epworth by Network

Saturday 27th June 2009
See board downstairs or Maureen Gray for further details



Ministers

Rev'd Sarah Jemison 8 Bradford Road, Shipley Tel: 01274 583356
Rev'd George Brigham 7 Bargrange Avenue, Shipley Tel: 01274 532672